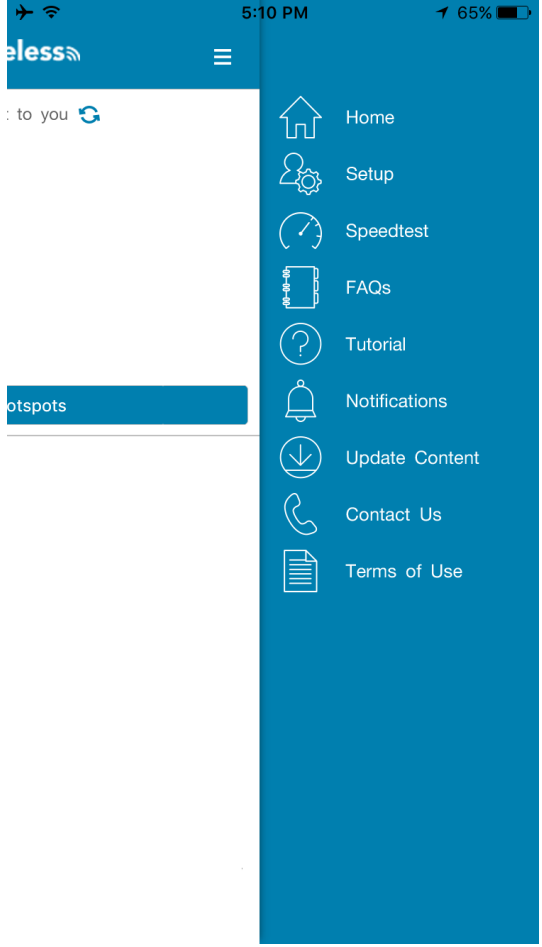


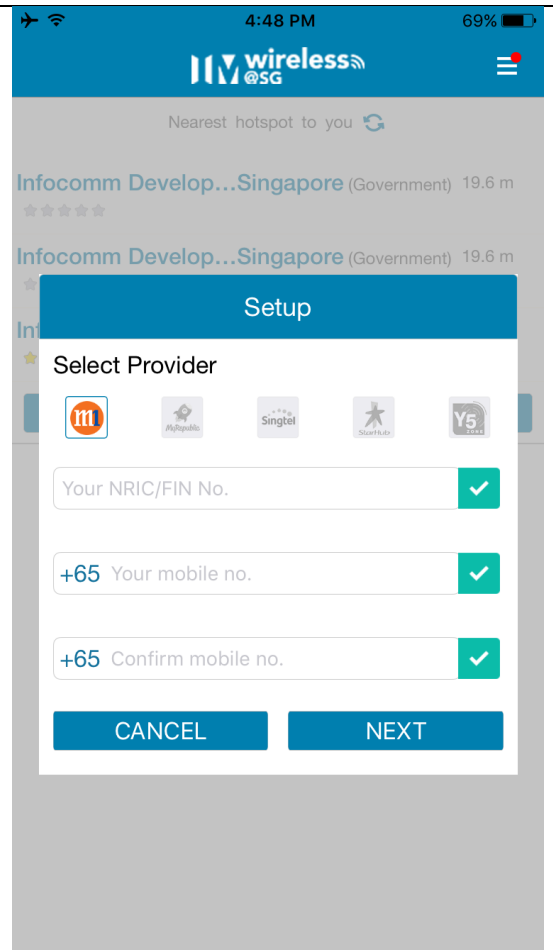
Non-SIM Automatic Login Setup Guide For iOS 7.0 and newer



<p>Step 1: Remove any existing Wireless@SG profile from your mobile device</p>	<ol style="list-style-type: none">1. Go to "Settings"2. Select "General"3. Select to "Profiles & Device Management"4. Select the "Wireless@SGx" profile and delete profile
<p>Step 2: Download the Wireless@SG app from Apple App Store.</p>	
<p>Step 3: Launch the Wireless@SG app. Select "Setup" from the menu.</p>	 <p>The screenshot shows the main menu of the Wireless@SG app. The top status bar displays the time as 5:10 PM and battery level at 65%. The app's header includes the logo and a hamburger menu icon. A list of menu items is shown on the right side, including Home, Setup, Speedtest, FAQs, Tutorial, Notifications, Update Content, Contact Us, and Terms of Use. The 'Setup' option is highlighted with a blue background.</p>

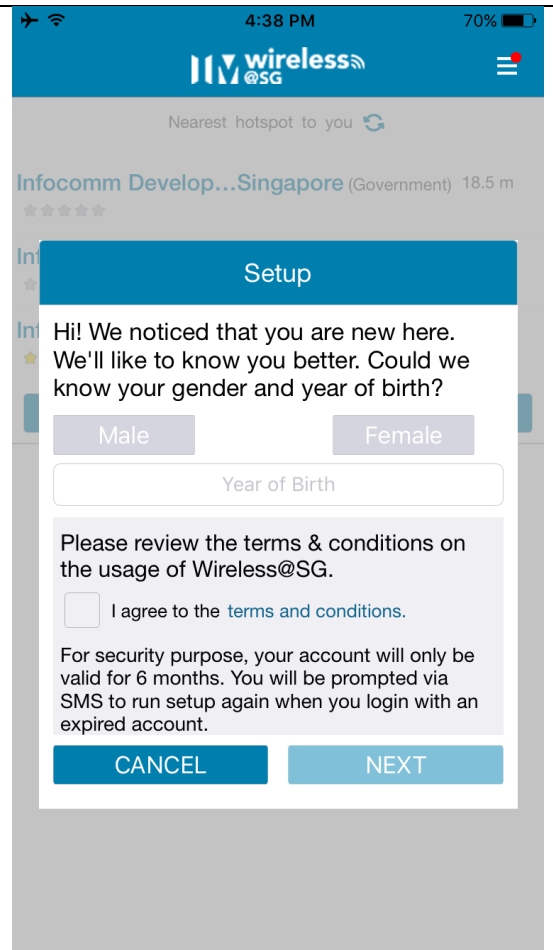
Step 4:

Select a Wireless@SG provider and key in your NRIC and mobile number and click "NEXT".



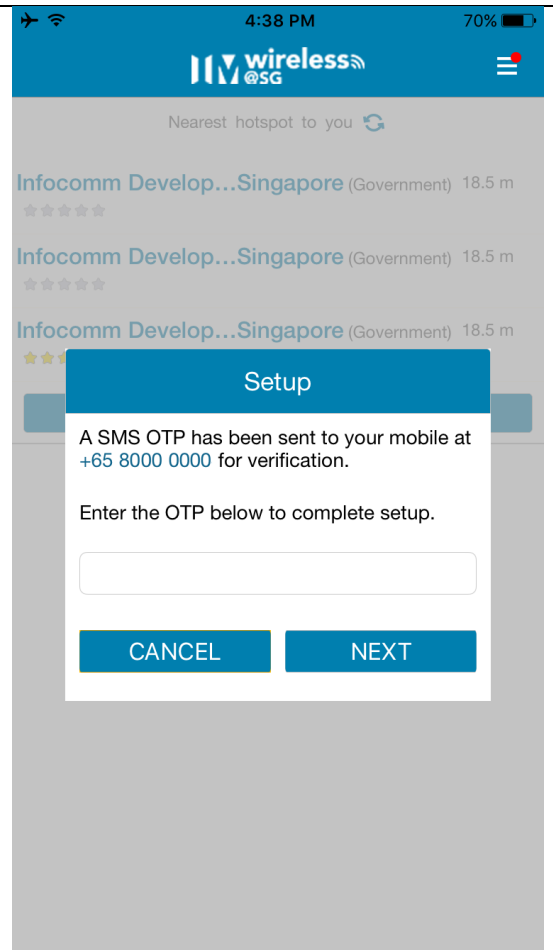
Step 5:

For first time users, you will be prompted to accept the terms & conditions, and to optionally provide your gender and year of birth.



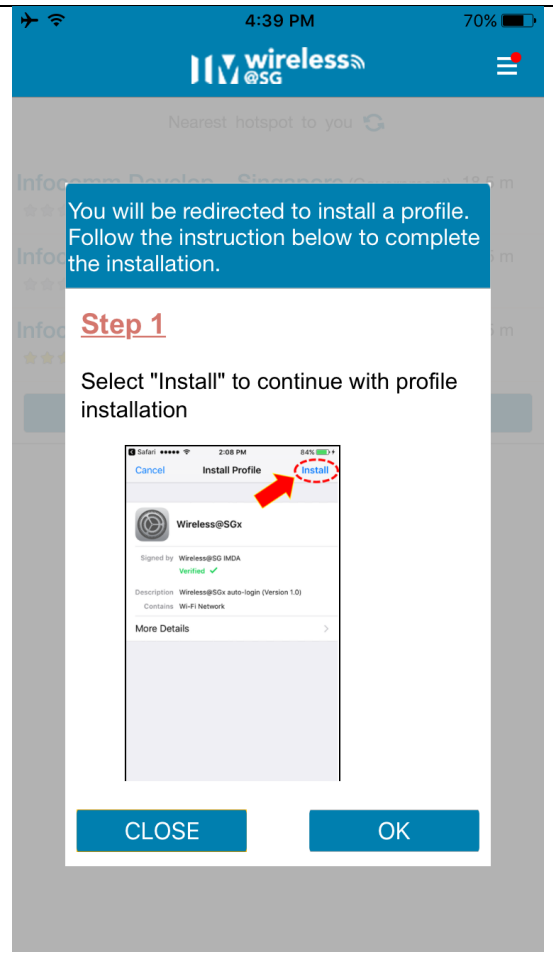
Step 6:

You will receive a one-time password (OTP) to the mobile number provided. Key in the OTP in the field and press "Next".



Step 7:

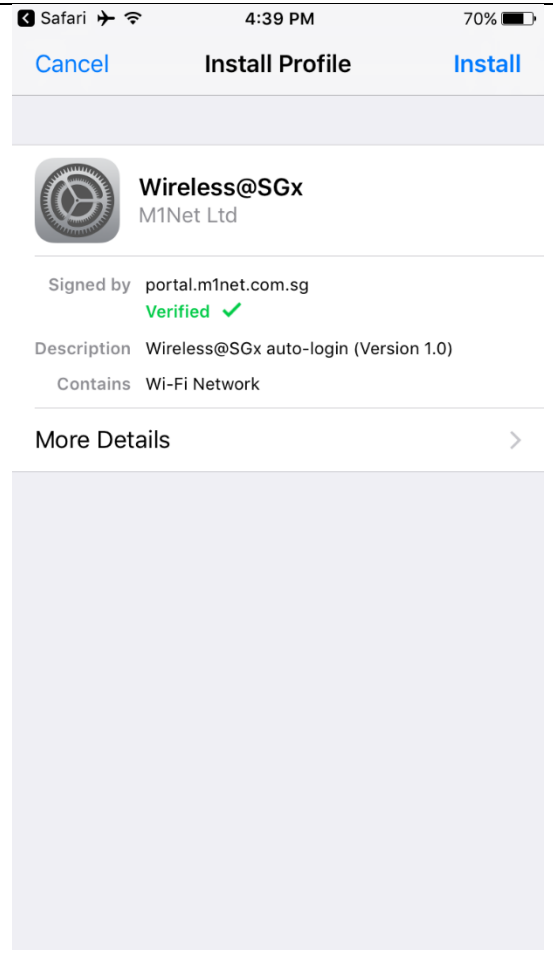
You will be redirected to install a profile. Follow the instructions on-screen to complete the installation.



The on-screen instructions are reproduced here for ease of reference

Step 8:

You will be prompted to install a profile. Select "Install" to continue.



The on-screen instructions are reproduced here for ease of reference

Step 9:

Enter your passkey, and then “Install” to complete the setup.

Congratulations. Your device is configured to connect automatically to Wireless@SGx



