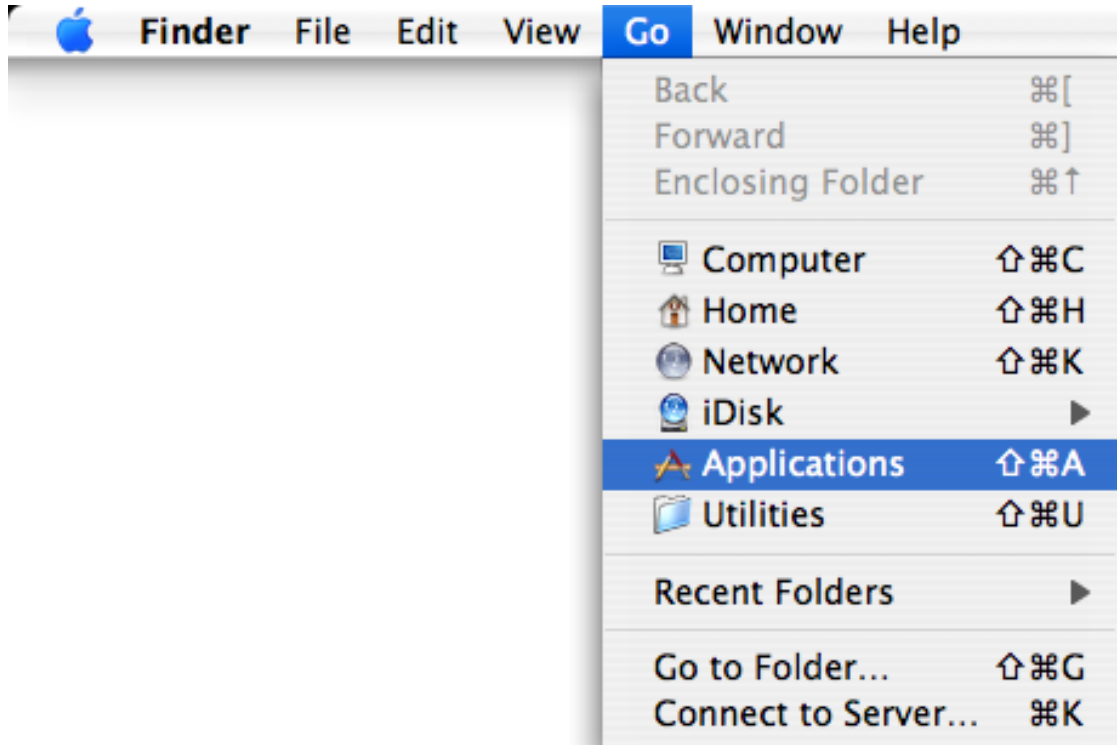


Seamless and Secure Access (SSA) Manual Configuration Guide for Mac OS X 10.4

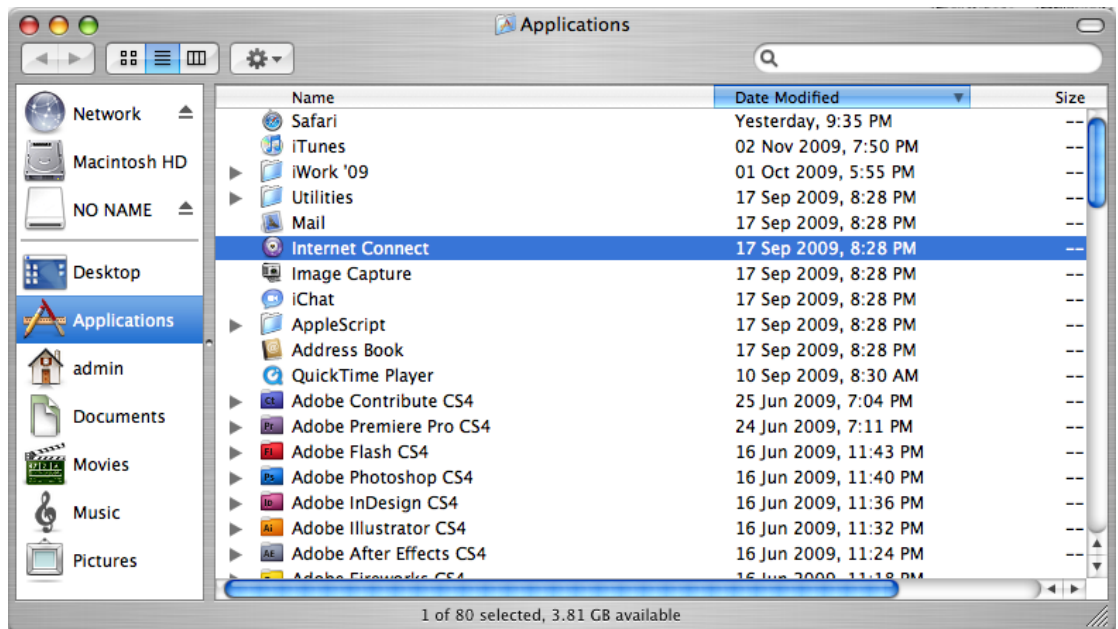


1 Connect to Wireless@SG via SSA

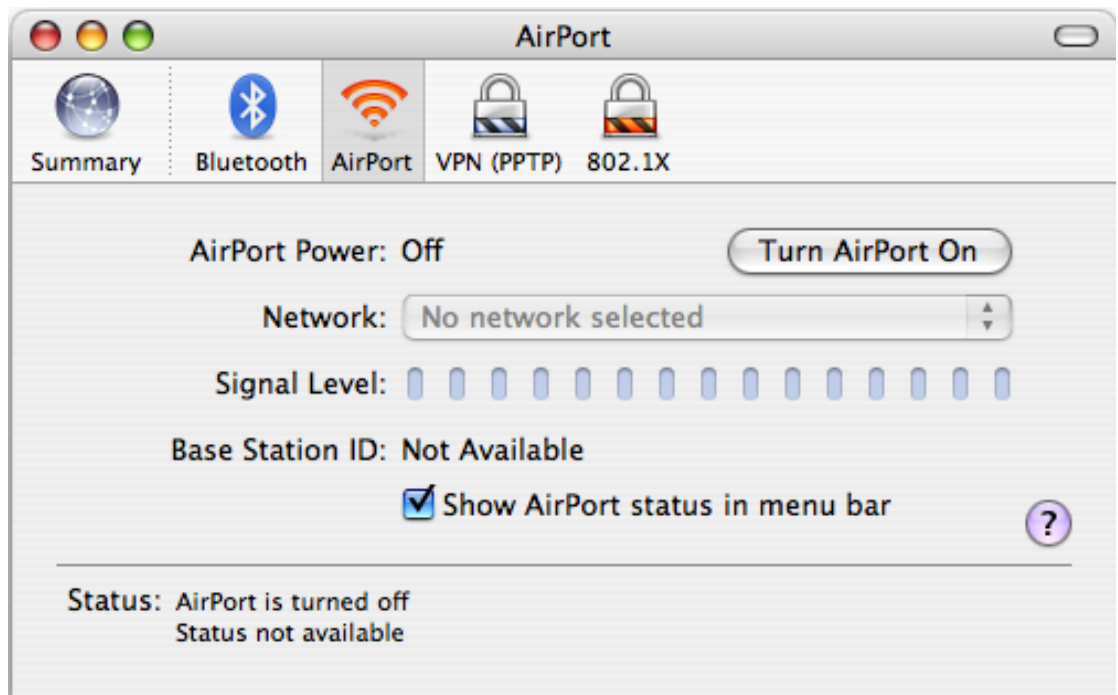
a) Choose **Finder > Go**, select **Application**.



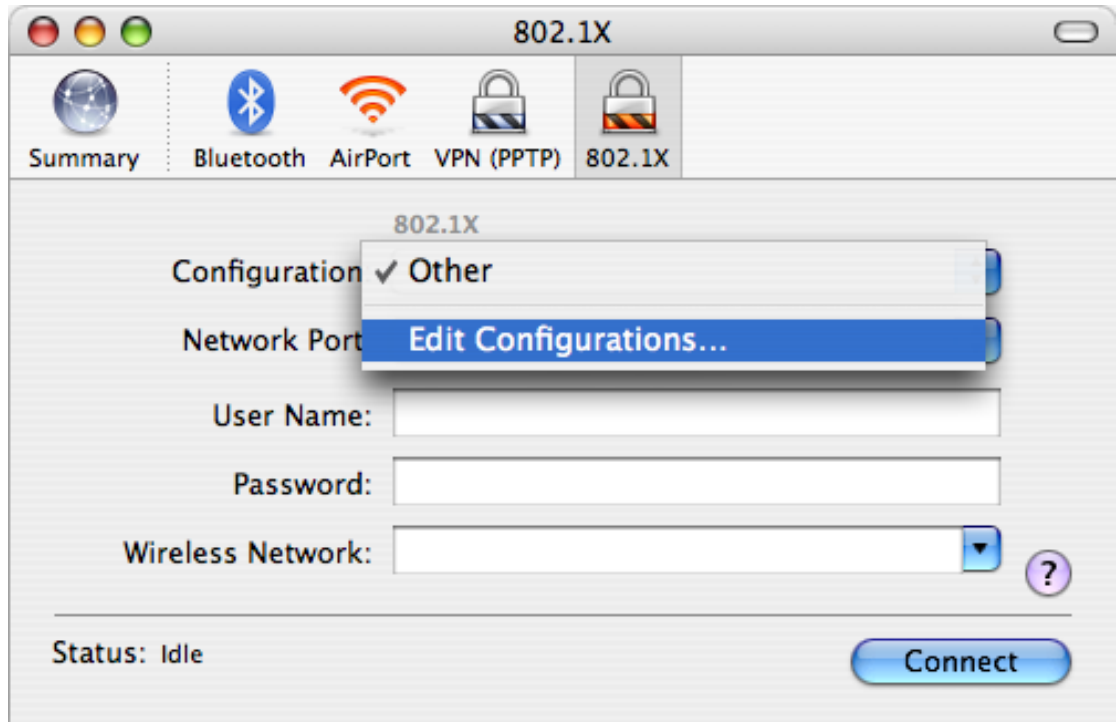
b) Select **Internet Connect** from Application menu.



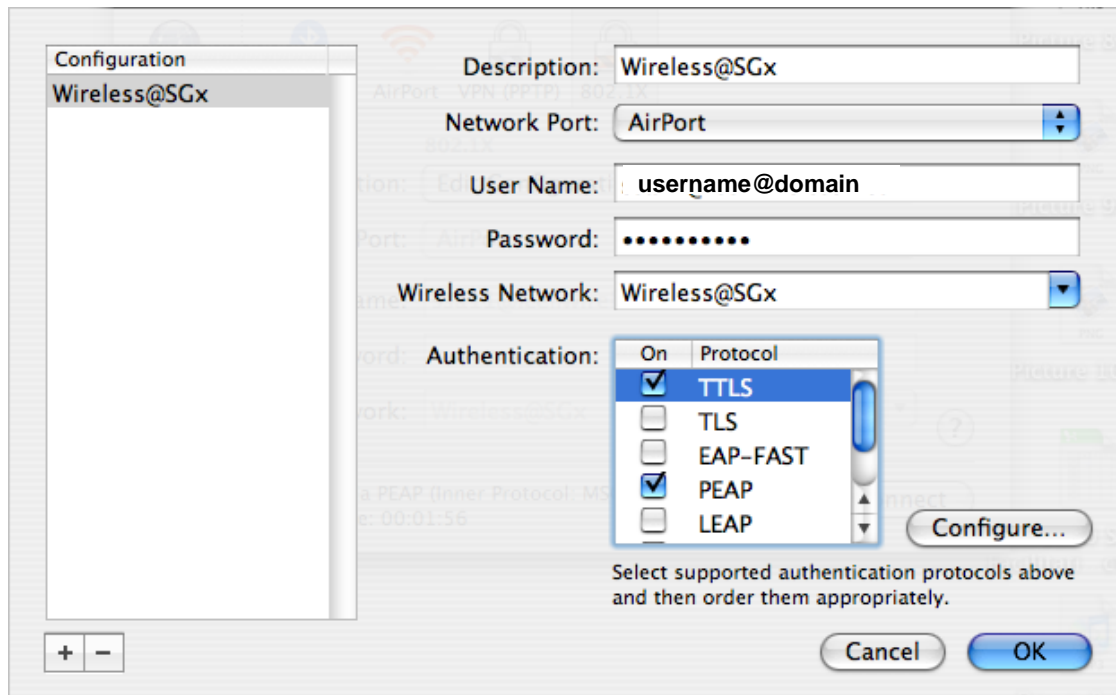
- c) Select **Airport** from **Internet Connect** menu, select **Turn AirPort On**.

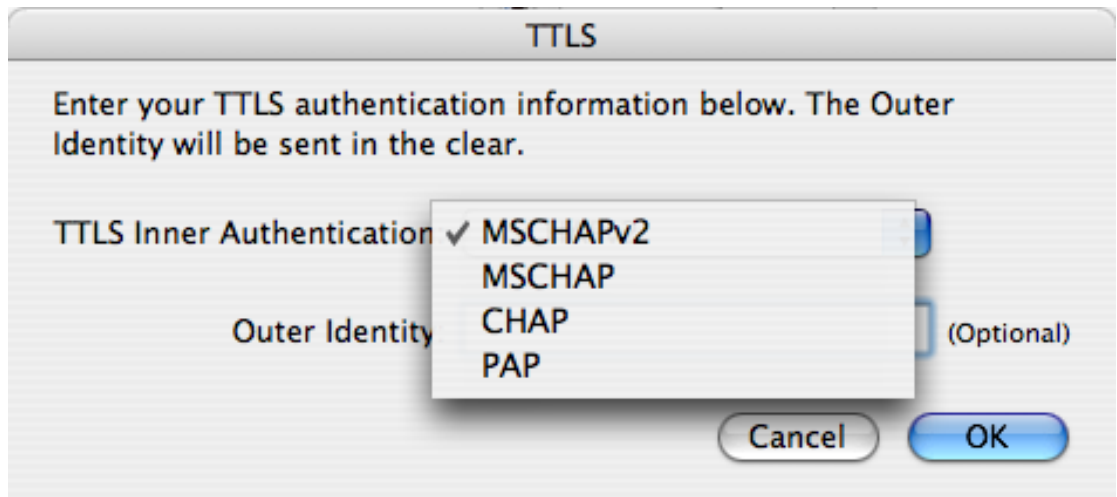


- d) Select **802.1X** from **Internet Connect** menu. Select **Edit Configurations...** from **Configuration** option.



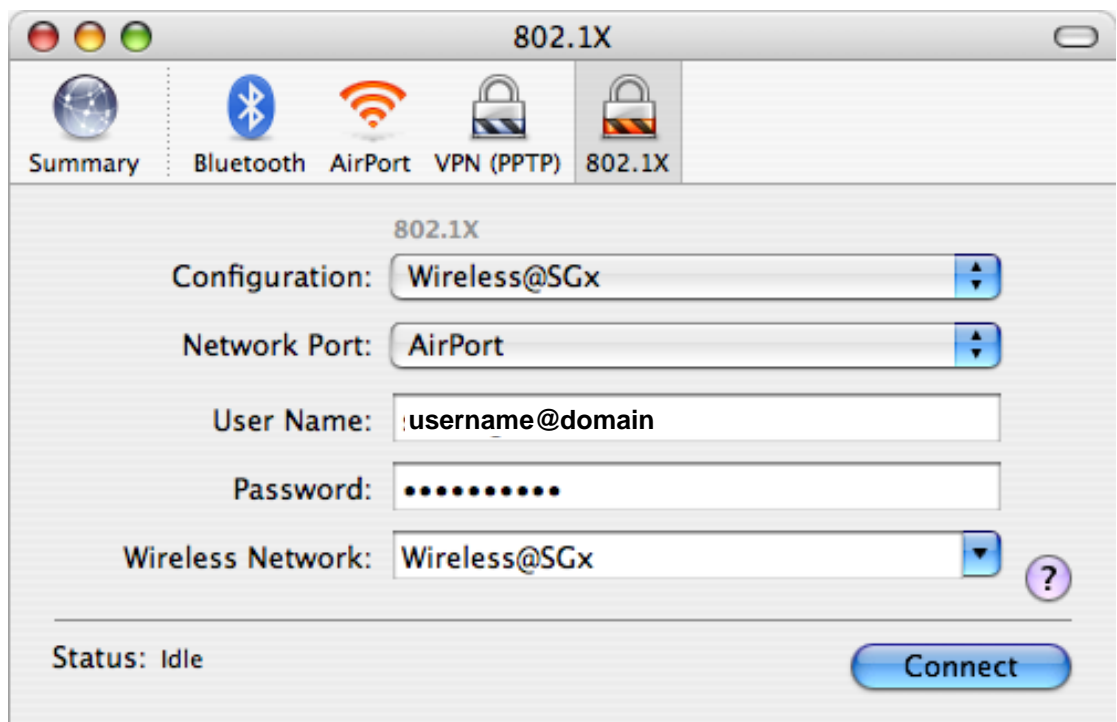
- e) Enter the following information:



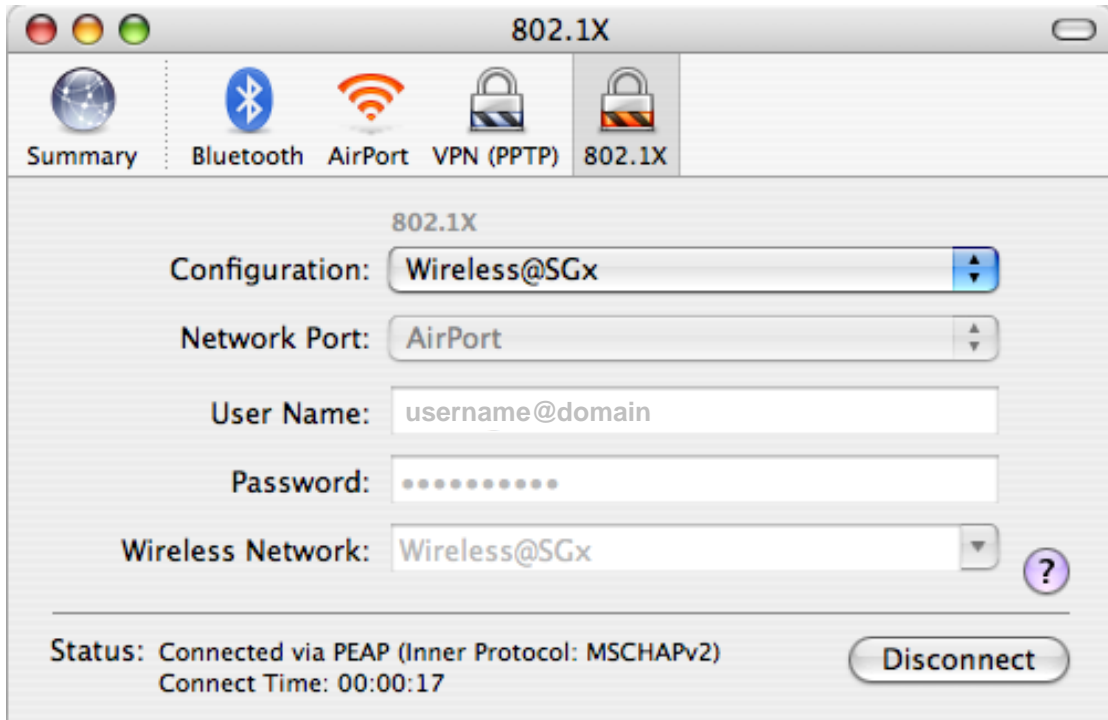


- **Description:** Wireless@SGx
- **Network Port:** Airport
- **User Name:** Enter your Wireless@SG username followed by @domain format
- **Password:** Enter your Wireless@SG password
- **Wireless Network:** Wireless@SGx
- **Authentication:** Select PEAP and TTLS, and disable the other options.
- Highlight **TTLS**, and click **Configure...**
- Make sure **MSCHAPv2** is selected for **TTLS Inner Authentication**
- Click **OK** to save the setting.

f) Click **Connect** to connect to Wireless@SGx SSID.

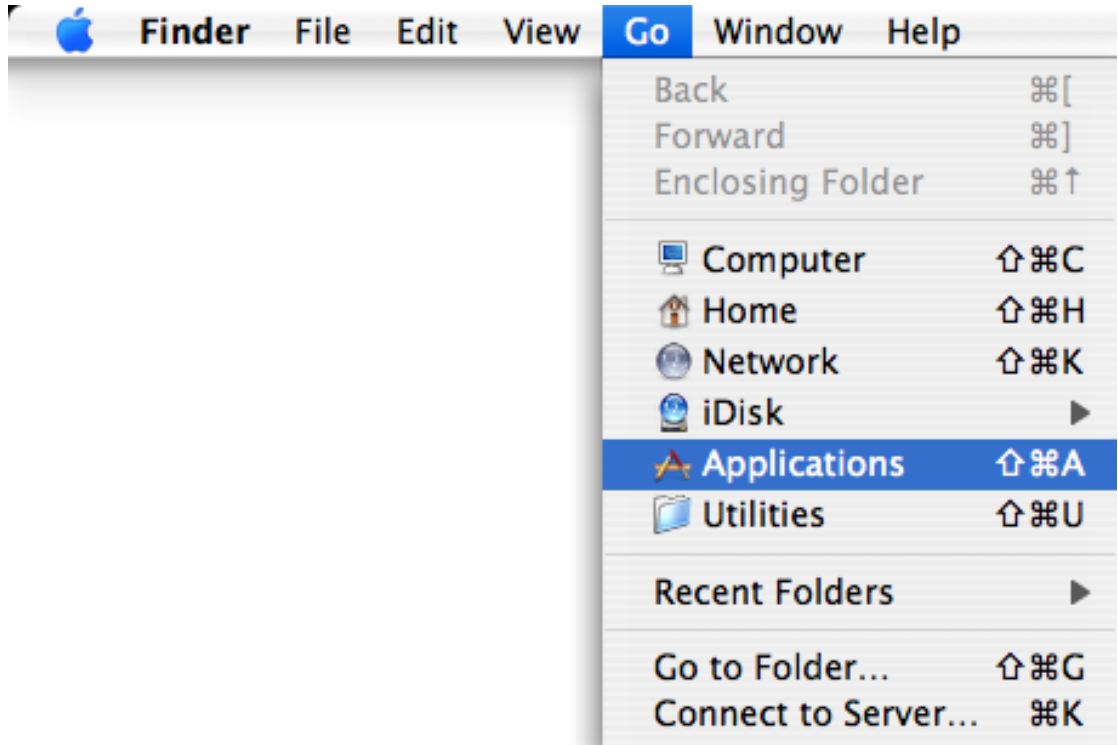


- g) Once successfully connected, you will be able to see your connection status as "Connected via PEAP (Inner Protocol: MSCHAPv2)".

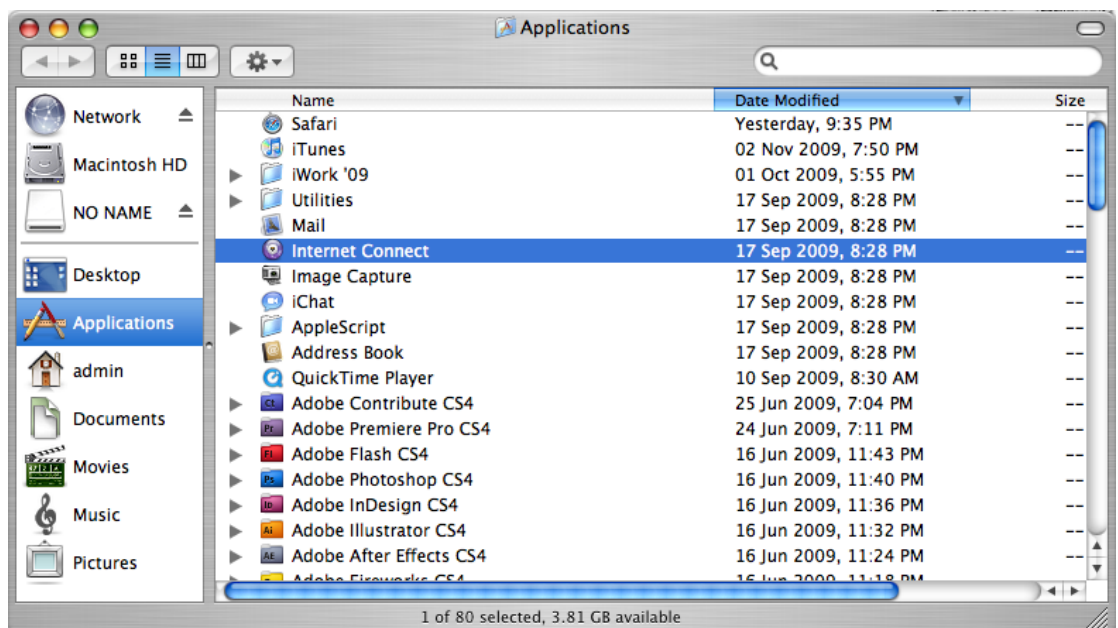


2 Uninstall SSA profile

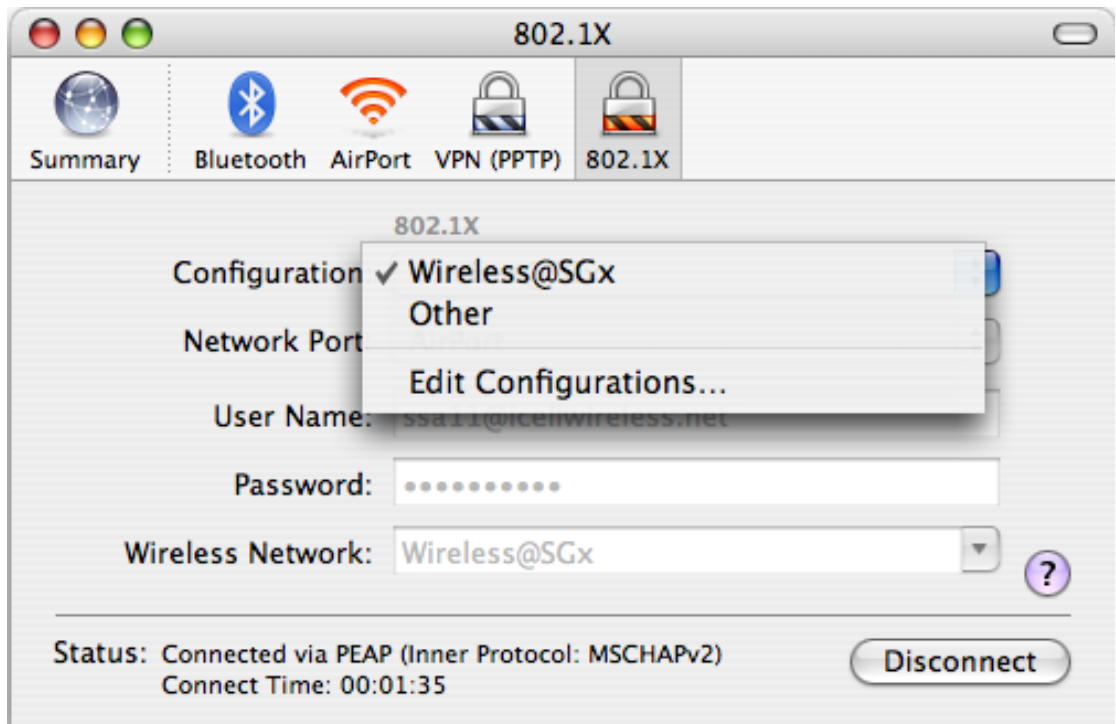
a) Choose **Finder > Go**, and select **Application**.



b) Select **Internet Connect** from Application menu.



- c) Select **802.1X** from **Internet Connect** menu. Select **Edit Configurations...** from **Configuration** option



- d) Click “-“ to remove Wireless@SGx profile.

