

For more information, please contact IDA:

Mr Kelvin Cheong
Manufacturing & Services
Industry Group
DID: (65) 6211 0494
Email: kelvin_cheong@ida.gov.sg

Mr Teo Yi Wei
Manufacturing & Services
Industry Group
DID: (65) 6211 0298
Email: teo_yi_wei@ida.gov.sg



The Infocomm Development Authority of Singapore (IDA) develops, promotes and regulates info-communications in Singapore, with the aim of establishing Singapore as one of the world's premier Infocomm capitals. To nurture an internationally competitive Infocomm industry, IDA offers a comprehensive range of programmes and schemes for both local and international companies.

Head Office

8 Temasek Boulevard #14-00 Suntec Tower Three,
Singapore 038988

Tel: (65) 6211 0888

Fax: (65) 6211 2222

Email: info@ida.gov.sg

Website: www.ida.gov.sg

COPYRIGHT © 2004 - IDA. ALL RIGHTS RESERVED.



**COLLABORATIVE
HIGH-TECH** MANUFACTURING
Seizing Opportunities in Today's Supply Chain Management

HIGH-TECH MANUFACTURING IN SINGAPORE

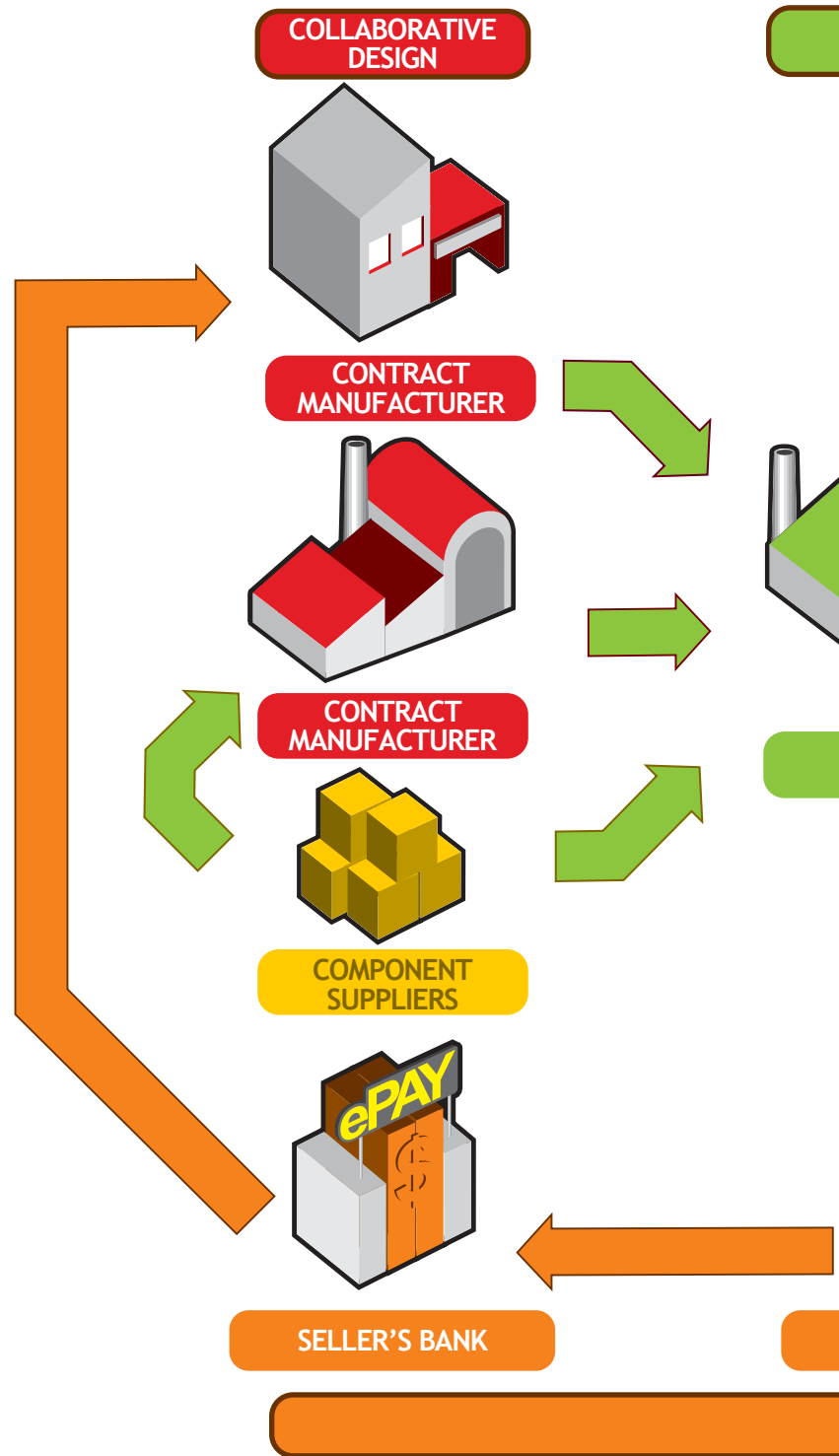
Manufacturing is a major engine of growth for Singapore's economy. The high-tech manufacturing alone, comprising the Electronics and Precision Engineering sectors, accounted for more than half of the total manufacturing output and workforce in 2002.

But in today's connected world, our high-tech manufacturing industry is facing intense competition both domestically and globally. With increasing outsourcing by global multi-national companies and shorter product life cycles, new strategies must emerge to meet these challenges, so that businesses can remain relevant and profitable.

OUR VISION

Singapore is well positioned as the ideal location for high-end manufacturing activities in the region. We can act as the nerve centre for regional supply chains to offer a wider range of value-added manufacturing services.

HIGH-TECH MANUFACTURING SUPPLY CHAIN

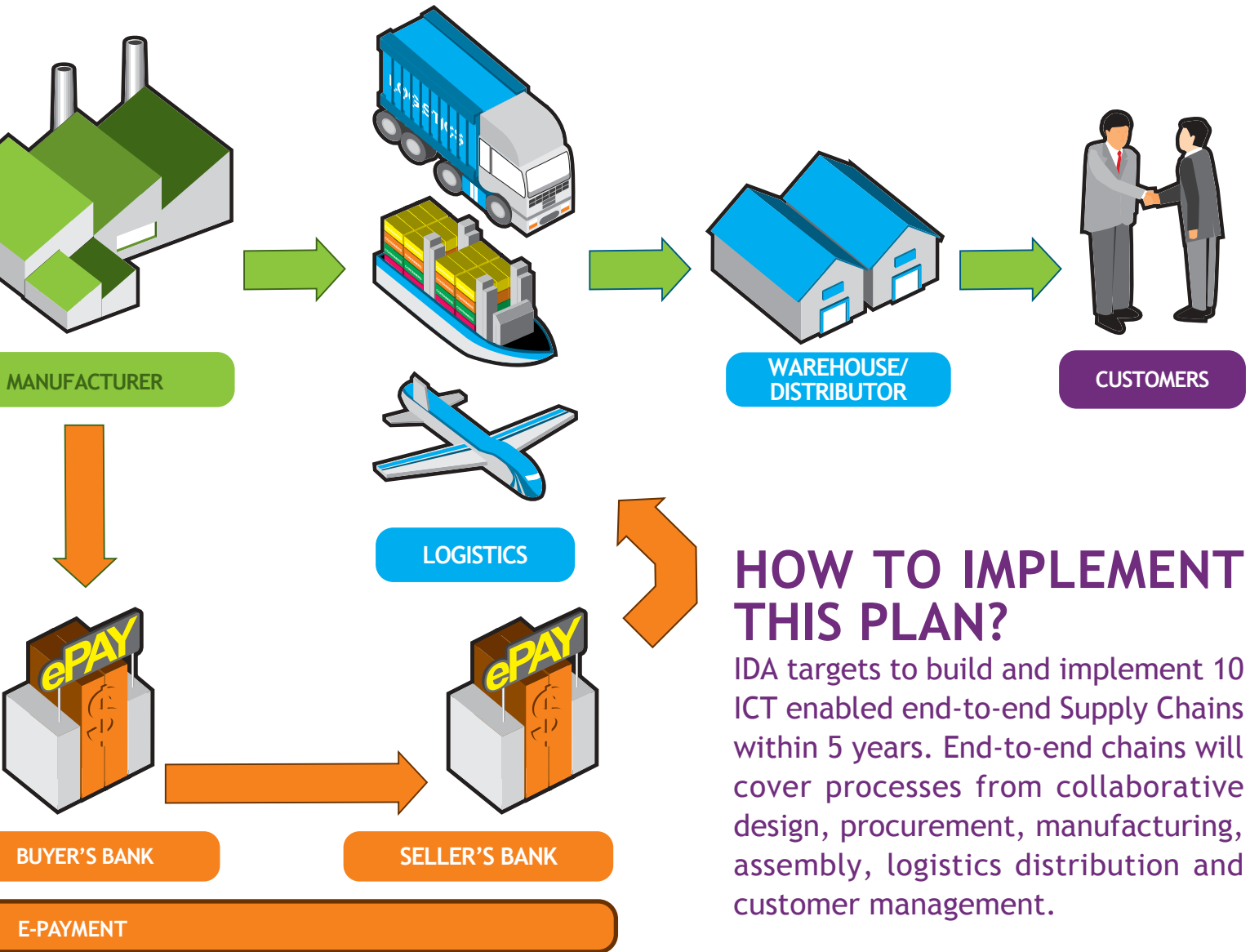


The Collaborative High-Tech Manufacturing Plan is conceptualized by IDA to develop integrated and responsive supply chains in Singapore, linked by Infocomm Technologies (ICT) and providing end-to-end services from product design to customer management.

PROCUREMENT

LOGISTICS

CUSTOMER MANAGEMENT



HOW TO IMPLEMENT THIS PLAN?

IDA targets to build and implement 10 ICT enabled end-to-end Supply Chains within 5 years. End-to-end chains will cover processes from collaborative design, procurement, manufacturing, assembly, logistics distribution and customer management.

KEY INFOCOMM TECHNOLOGY TOOLS TO REALISE THIS PLAN

To build these chains, IDA encourages the adoption of:

- RosettaNet standards for automating business processes;
- Web Services for flexible integration; and
- ICT applications such as Product Life Cycle Management (PLM) software for Collaborative Product Design.

INTEREST AREAS

RosettaNet Standards

RosettaNet is a set of business-to-business exchange standards created for high-tech supply chains, which enables manufacturing processes to be linked seamlessly between multiple parties, thereby increasing operational efficiency and productivity. Used by over 500 of the world's leading Information Technology, Electronic Components and Semiconductor Manufacturing companies, RosettaNet is the de facto e-business standard in the high-tech sector.

RosettaNet standards are defined sets of business processes known as RosettaNet Partner-Interface-Processes® (PIPs®). When fully implemented, PIPs® will translate into integrated and automated work processes.

Web Services

Web Services, based on Extensible Markup Language (XML) format, is a flexible and cost-effective Infocomm tool to integrate supply chains and implement RosettaNet standards.

Infocomm Tools for Collaborative Product Design

PLM software is an Infocomm tool to enable collaborative product design. It allows the sharing of product design data inside and outside the enterprise, and helps to track changes from the design and development stage to production.