



NEXT GENERATION FACILITIES MANAGEMENT PLATFORM

An integrated facilities management (IFM) platform provider powered by proprietary A.I.-technology capabilities leveraging **machine learning**, **computer visioning**, **data analytics** to enable autonomous operations.

Vision

Transform every building by equipping them with smart and green technologies and be future-ready

Mission

Enable Smart Building Automation across all facilities in the new era





According to the Global Alliance for Buildings and Construction, buildings are responsible for ~37% of global CO₂ emissions, which puts pressure on owners and operators to take urgent action to meet global and corporate commitments.

Real Estate is an important sector for the economy, environment, and the people.



7.1% CAGR (2024-2028)
US\$5.7t (from US\$4.3t)



60% of cities' CO₂ emissions
90% of people's time spent in buildings

140+

Countries proposed/
committed to Net Zero
carbon emission by 2050

63%

Global Fortune 500
companies have emission
reduction targets in place

96%

Of companies with
approved SBTi targets
include Scope 3

Source: The Business Research Company 2024, International Monetary Fund, Fortune, Science Based Targets



HYBRID WORKING & OCCUPANT EXPERIENCE

Due to COVID-19 pandemic, employees and workers favor hybrid working arrangement, leading to the need for optimal space utilization in buildings. Occupants also prioritize health, wellbeing and productivity when present in shared spaces.



TECHNOLOGY PARTNERSHIP & INVESTMENT

Building owners need to leverage technology to optimize asset performance and tenant occupancy as well as consider technology leasing options or data/software as a service platforms to keep operating cost and bottom-line manageable.



DIGITIZATION & NEW TECHNOLOGIES

Users within the buildings can adopt digital solutions to improve productivity. With frontier technologies like Artificial Intelligence, Machine Learning, and Digital Twins for Analytics, users can remotely manage their buildings and the workforce.



SUSTAINABILITY & DECARBONISATION

With increased regulatory push towards sustainability, companies are mandated to produce ESG reports and compute GHG emissions to achieve Net Zero targets and goals. Climate-related actions will take a period of time to yield results and change.

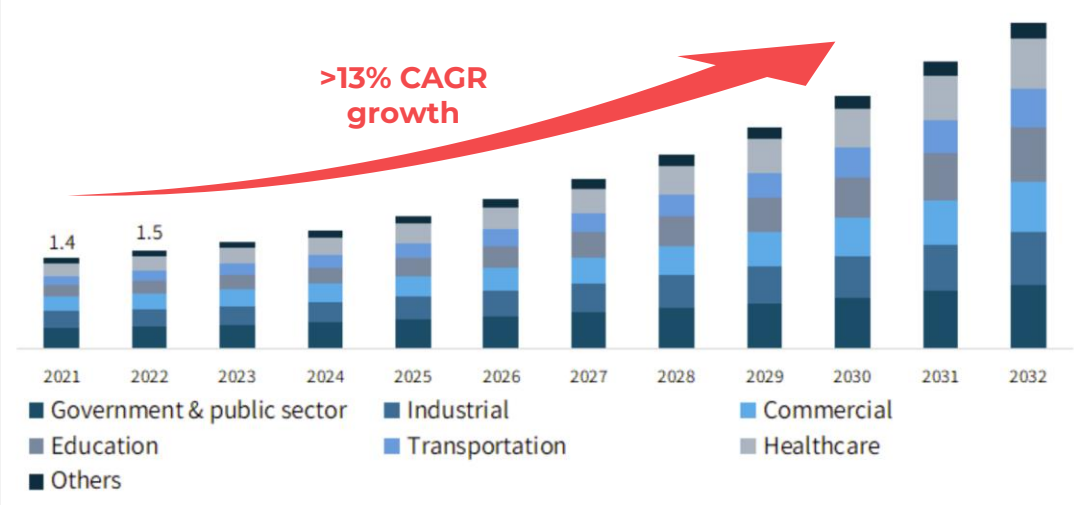


Urbanisation and modernization will increase demand for smarter and greener facilities, managed through cloud-based facilities management solutions that can be easily integrated, will drive growth in the FM space.

Global Facility Management Market Size (From 2021 to 2032)

US \$,000,000,000 /
USD Trillion

Growth of >13% on account of rapid modernization and increasing infrastructure development projects.



Source: Global Market Insights (August 2023)

The emphasis on the development of smart cities and business hubs has become more prevalent. The implementation of large-scale commercial projects will stimulate the adoption of facility management services to ensure seamless functionality, safety, efficiency, and sustainability of the core business.



Aging population, rising labour costs, & labour supply shortage will affect FM operations

By 2030, 1 in 4 Singaporeans will be aged over 65 years. The average age of facility services worker will be 60 years old. Progressive Wage Model (PWM) is set to increase labour cost for businesses. Companies will struggle to attract new talent into the workforce, causing additional strain in manpower management.



Rise in demand for facility management solutions integrated with intelligent software

According to [Markets & Markets 2023](#), the growth of Facility Management software solutions is attributed to the rising need for enterprises to deliver highly personalized customer experiences and redesign the traditional facility management model by leveraging advanced software, IoT, and analytics to stay competitive globally.



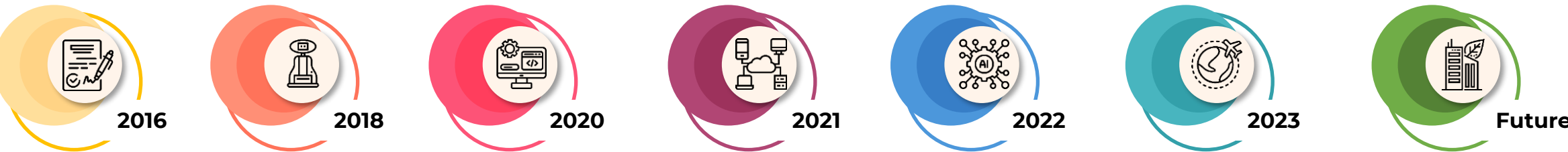
The evolution of technology will need to be sustainable, enabling resiliency & performance

The industry is still moving from pen and paper to digital platforms. According to a [Gartner report](#), enterprises are looking beyond delivering technology alone; instead, they will look to sustainable technologies such as traceability, analytics, emissions management and A.I. to achieve their sustainability objectives.

COMPANY HISTORY AND GROWTH OVER THE YEARS



Since our establishment in 2016, the company has grown from a design and development house for cleaning robotics to an all-in-one facilities management technology provider in the PropTech sector.




Robotics (Cleaning)

- Awarded the JTC MHIO Cleaning Robotics project with Shanghai Gaoxian Automation Technology



Software & Hardware Integration

- Awarded RICS Most Innovative Award (SIMPPLE Software)



Start Local, Go Global

- Listed on Nasdaq Capital Markets in the United States under the ticker symbol NASDAQ:SPPL
- Clinched overseas projects

Establishment

- Incorporation of IFSC Pte. Ltd.
- Incorporation of Gaussian Robotics Pte. Ltd. in 2017

Software Development

- Awarded the NEA Cleaning & Security multifunctional robot development project
- Incorporation of SIMPPLE Pte. Ltd.
- Product expansion into IoT sensors & Software

Era of Artificial Intelligence

- Awarded NEA + ESG IoT development project
- Patent pending for SIMPPLE A.I. process – awaiting approval
- Incorporation of SIMPPLE Ltd.
- Pilot projects in Japan

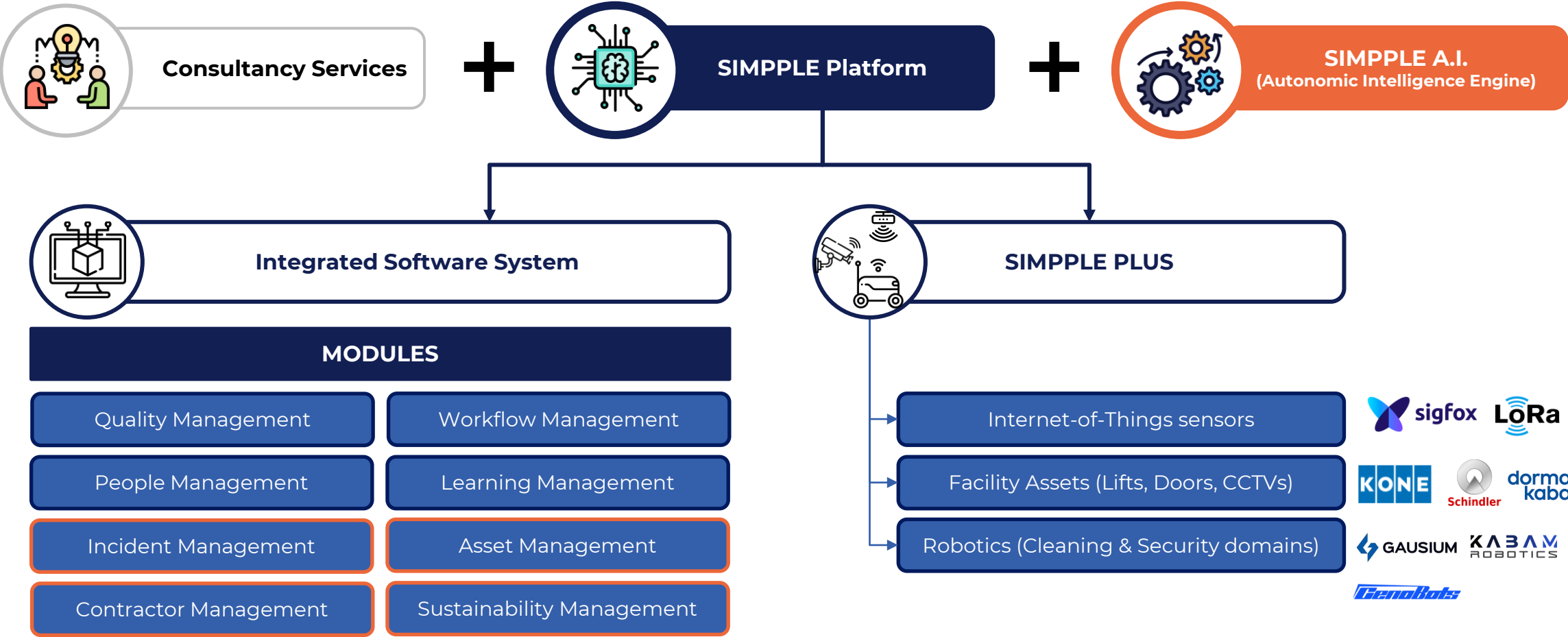
Era of Smart & Green Buildings

- Continuous product expansion through partnership and M&As
- Product improvement with R&D and generative AI
- Strengthen sales & marketing with global brand visibility

OVERVIEW OF OUR SIMPPLE ECOSYSTEM SOLUTION SUITE



We envision the SIMPPLE Ecosystem across all built environment properties in the future





Facilities Management industry falls within all 3 roadmaps under the Built Environment Cluster





Different robot models designed for different needs





Proprietary software that integrates technology requirements within a facility into a single unified SSO platform



Source: <https://youtu.be/7WHHQeKrVNo?si=-90LMNLcyp6DElye>

COCKPIT

ATTENDANCE

OPERATIONS

AUDIT

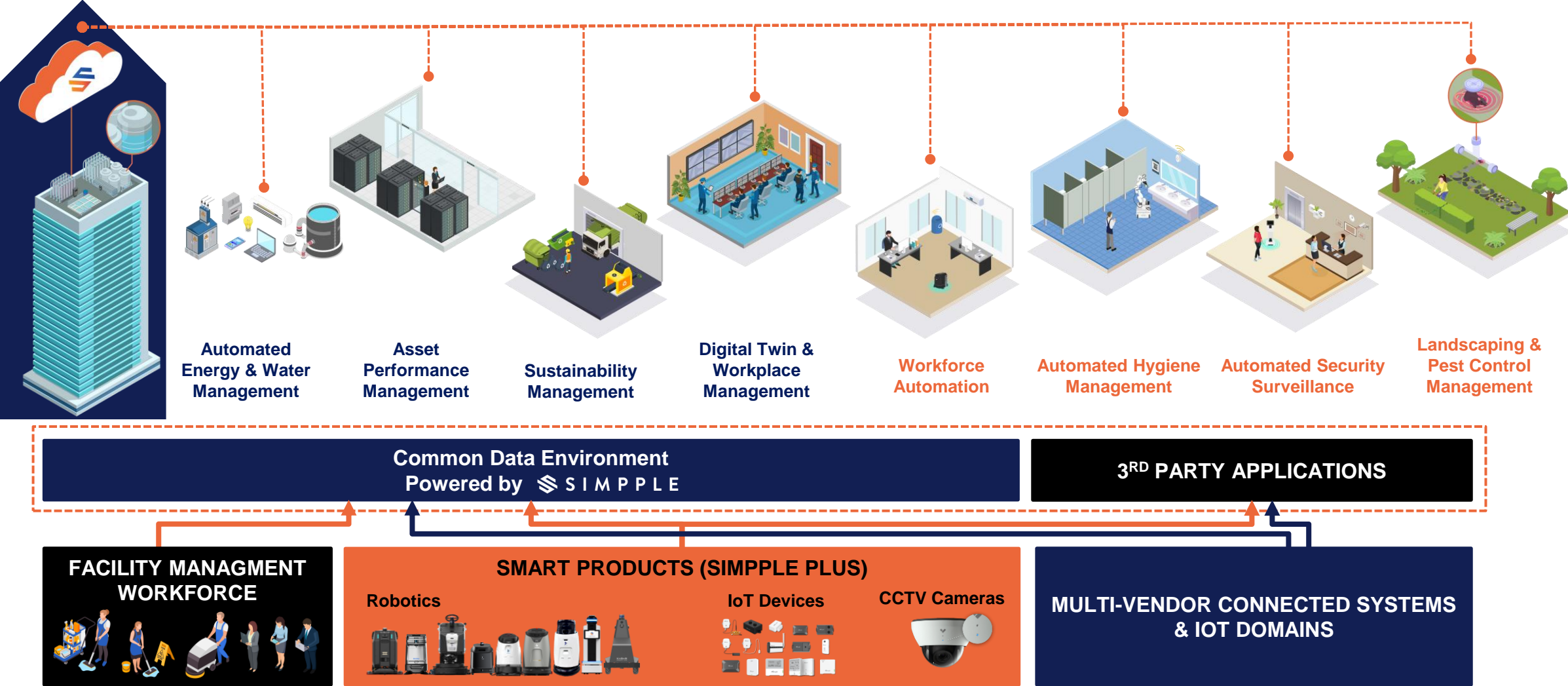
FEEDBACK

ROBOTICS
& IOT SENSORS

UNDERSTANDING SIMPPLE COMMON DATA ENVIRONMENT A LITTLE BETTER



With SIMPPLE integrated approach, end users can expect A.I.-driven insights, automated responses, and easy-to-use dashboards. The open nature of SIMPPLE Software supports integration with other software solutions.





Built for the cleaning industry, SIMPPLE can help you stay equipped with new technologies and manage the workforce



Robotics & Automation



Cleaning robots enhance cleaning efficiency and productivity by automating routine tasks, ensuring consistent performance, saving time, and providing data-driven insights for continuous improvement.



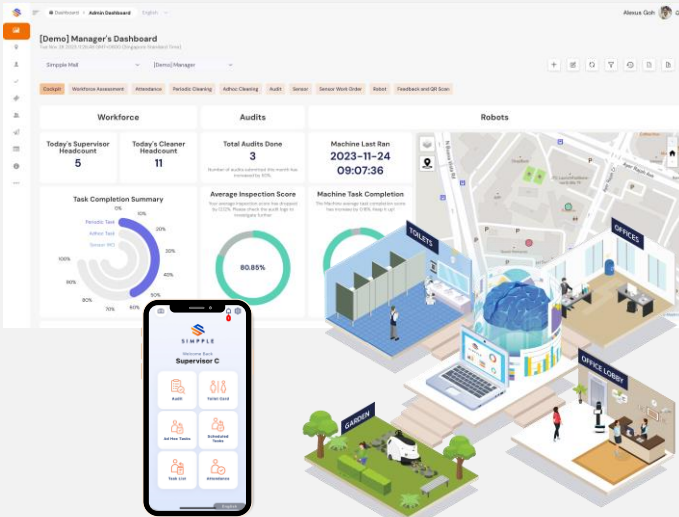
Internet-of-Things Sensors



IoT sensors enable predictive analysis and on-demand activations which can enhance cleaning efficiency and increase productivity through insights and better resource allocation.



Integrated SIMPPLE Software



A contactless ecosystem solution that empowers facility managers, supervisors, and workers to manage their resources more efficiently through insights collected from IoT assets, robots, and the humans.



Grown into security, SIMPPLE now complements adjacent soft facility services domain with groundbreaking technologies



Robotics & Sensors



Security and multi-functional robots support operational efficiency by filling in positions that are in demand, automating trigger alerts for incidents, and helping enterprises keep rising labour costs low with technologies.



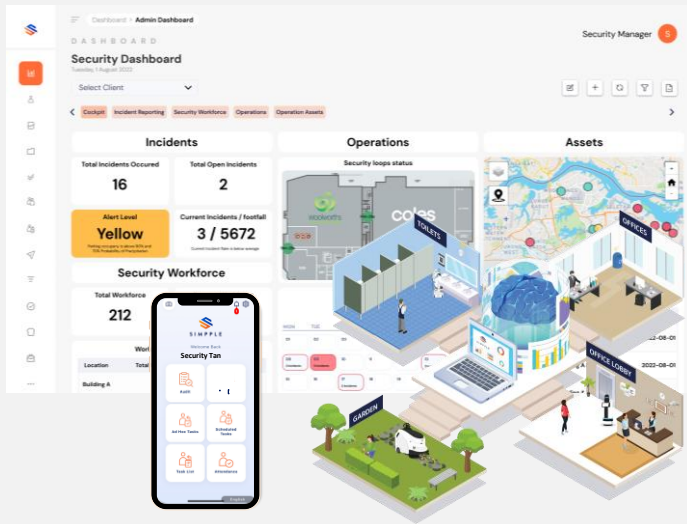
Security Infrastructure



SIMPPLE can work with brownfield sites, leveraging existing CCTVs with our computer vision analytics model to detect incident and environment-related matters quicker to enable a safer environment.



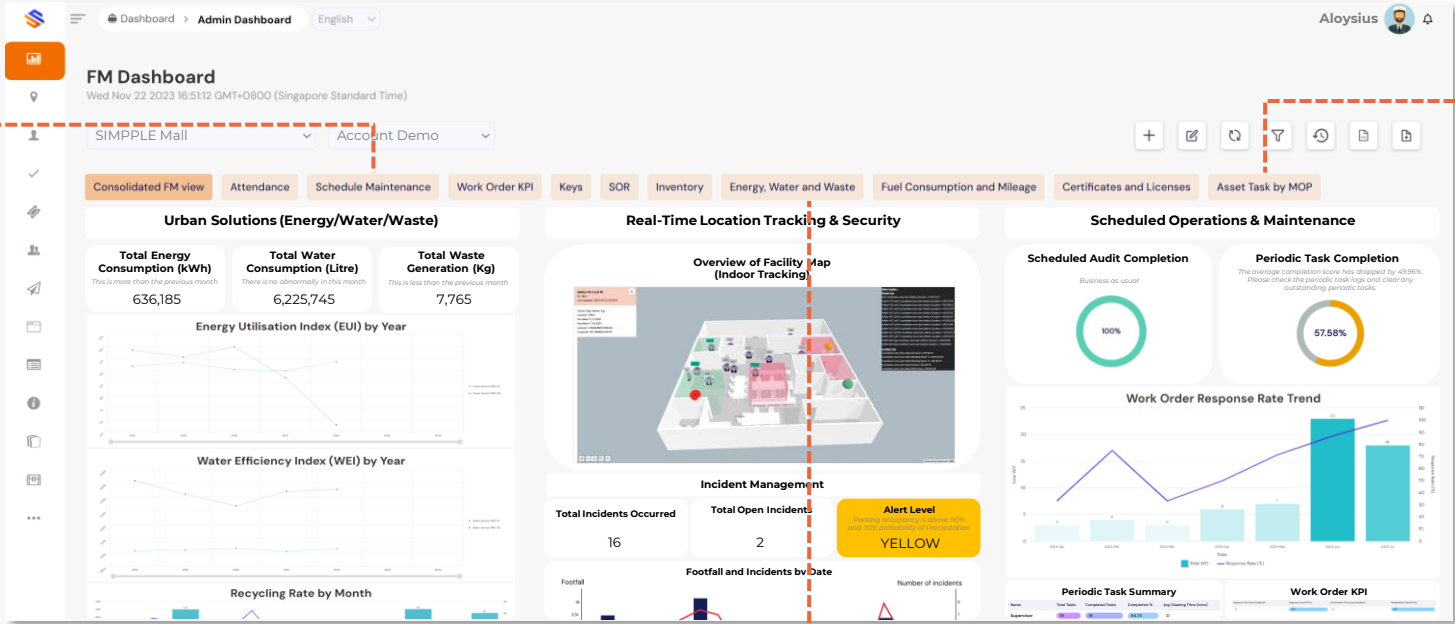
Integrated SIMPPLE Software



A contactless ecosystem solution that empowers facility managers, supervisors, and workers to manage their resources more effectively through CCTV analytics and push notifications to react/respond.



As a holistic one-stop shop software platform, SIMPPLE can collect and visualize hard facility management data



Asset Management

Asset management is core function to all facilities management companies and this module enables users to register assets – both robots and physical hard assets – on the platform. Physical hard assets can be converted into ‘robots’ such that information is tracked for preventive and predictive analysis.

Users can also manage all issues between service providers and users through the ticketing option made available in this module.



Maintenance Management

This module can capture information related to routine and scheduled maintenance for robots, sensors, and physical assets. It provides a checklist for maintenance and users can document ad-hoc repair tasks.



Sustainability Management

This module captures data from energy, water and waste sectors, enabling real-time monitoring and management reporting. Carbon capture insights will become mandatory in the future to all stakeholders.



Contractor Management

Given the complexity of building-level contracts where tenures differ, this module is able to capture all contractors’ expiry and renewal to prepare well ahead of time. Performance of contractors can also be tracked in here.

REAL-LIFE EXAMPLE: HEALTHCARE FACILITY USING SIMPPLE ECOSYSTEM



SIMPPLE’s first foray into developing an integrated software platform led to the conferment of a prestigious award

Deployment Highlights



Project Highlights

>7,700,000

Square feet

Space cleaned by robots throughout project time

55%

reduction

Daily cleaning details reduced from 9 to 4 per toilet

83.3%

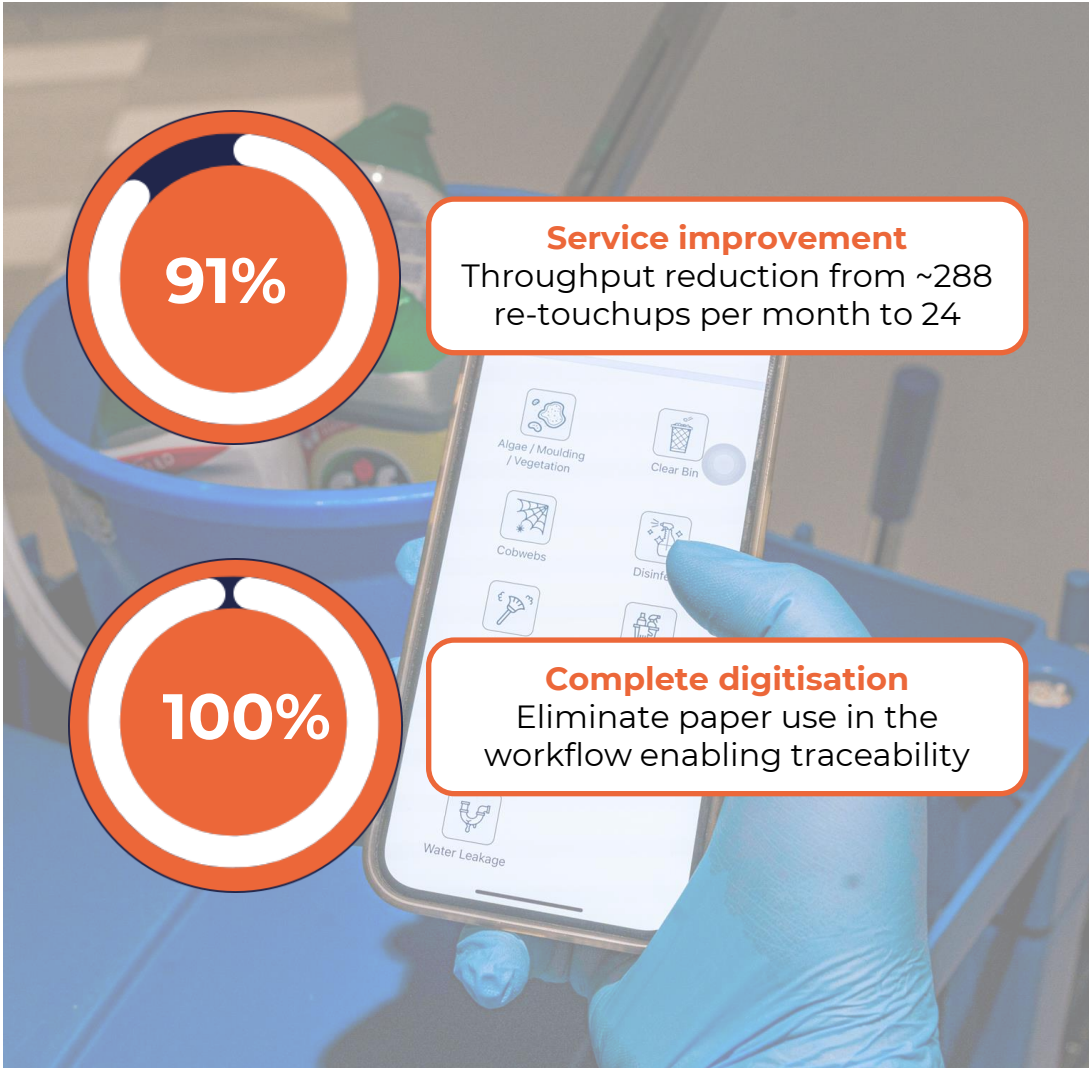
productivity savings

Robots support routine cleans, freeing up workers’ time

>50 hours

savings per month

Transition from schedule-based to on-demand cleaning



REAL-LIFE EXAMPLE: RETAIL MALLS USING SIMPPLE ECOSYSTEM



Deployments made easy with SIMPPLE using IoT devices, robotics, and an integrated software platform

Deployment Highlights

Current Standard	Routine Cleaning	Solution	On-demand Cleaning	Reduction (%)	Total
Reset Cleaning	450H	-	450H	-	22.4% <small>(est. 400 man-hours per mth reduction) and can stretch up to 100 more hours by improving operations from data collection</small>
Toilet Cleaning	600H	Smart Toilet System	421.5H	~30	
General Cleaning	285H	Cleaning Robot	218H	23.5	
Evening Cleaning	420H	Cleaning Robot	273H	35	



Featured Projects in Singapore and Globally



Aeon Mall, Japan
Oota, Kireuriwari & Kamagaya



Westfield, Australia
Mount Druitt



Sun Hung Kai, Hong Kong
Metroplaza



World's first 2-in-1 bot

RRP: S\$65,000
(capex or leasing model available)

Expect **up to 75% cost savings** by supplementing the security and cleaning workforce of about 1 to 1.5 personnel in each domain.

REAL-LIFE EXAMPLE: EDUCATION INSTITUTION USING SIMPPLE ECOSYSTEM



Built to scale along with buildings, data can be parceled at site-level and aggregated at precinct-level for different users

Deployment Highlights

>60 buildings/sites



350 toilets



4 service providers



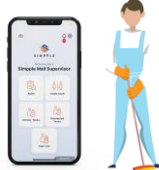
5 robots deployed



>650 sensors



~1,000 users



Project Highlights



Unified Platform with Single Sign-On (SSO) for IoT, Robotics, Workforce



Shift towards **On-demand** activation (Time savings)



Consolidate multiple **contractors/vendors** on a single dashboard





What if we live in a world where humans live, work, and play alongside robots?



THE FUTURE: SIMPPLE A.I. (NEXT GENERATION AUTONOMIC INTELLIGENCE ENGINE)



Featured by ChannelNewsAsia (CNA) at the 2022 Clean Enviro Summit Singapore (CESG 2022) exhibition



THE FUTURE: SIMPPL E A.I. (NEXT GENERATION AUTONOMIC INTELLIGENCE ENGINE)



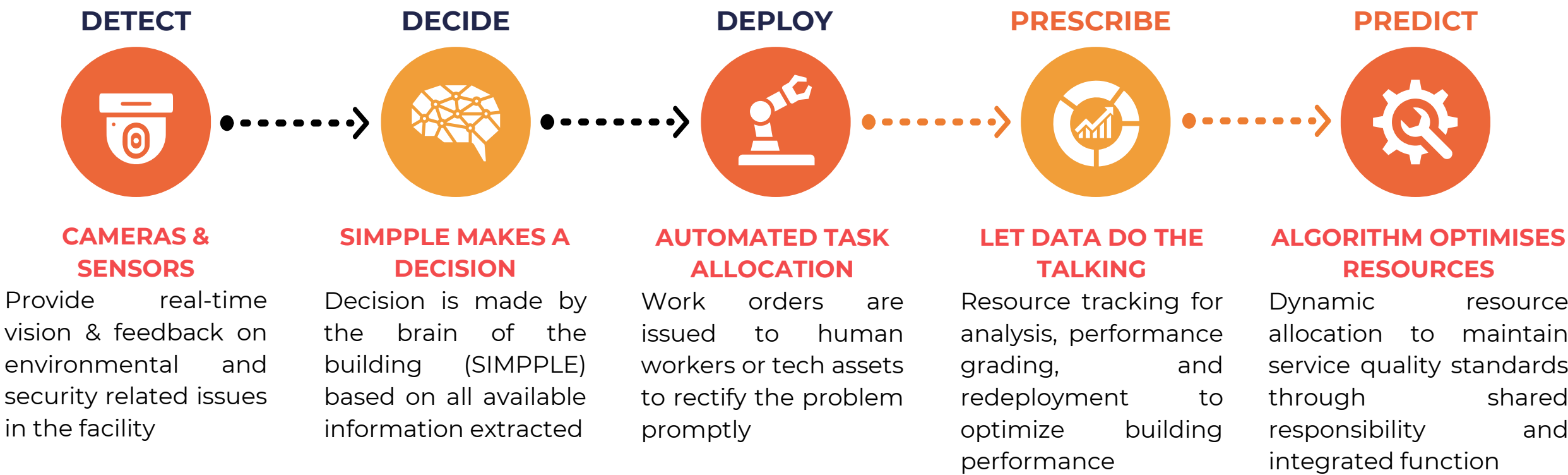
SIMPPL E A.I. Patent Awarded and SIMPPL E is working with other brands of robots – LionsBot



**MOU with LionsBot
13 November 2023**


















Every building mirrors a human body where each component plays an integral part to the overall operations



KEY STATISTICS AND MILESTONES FOR SIMPPLE



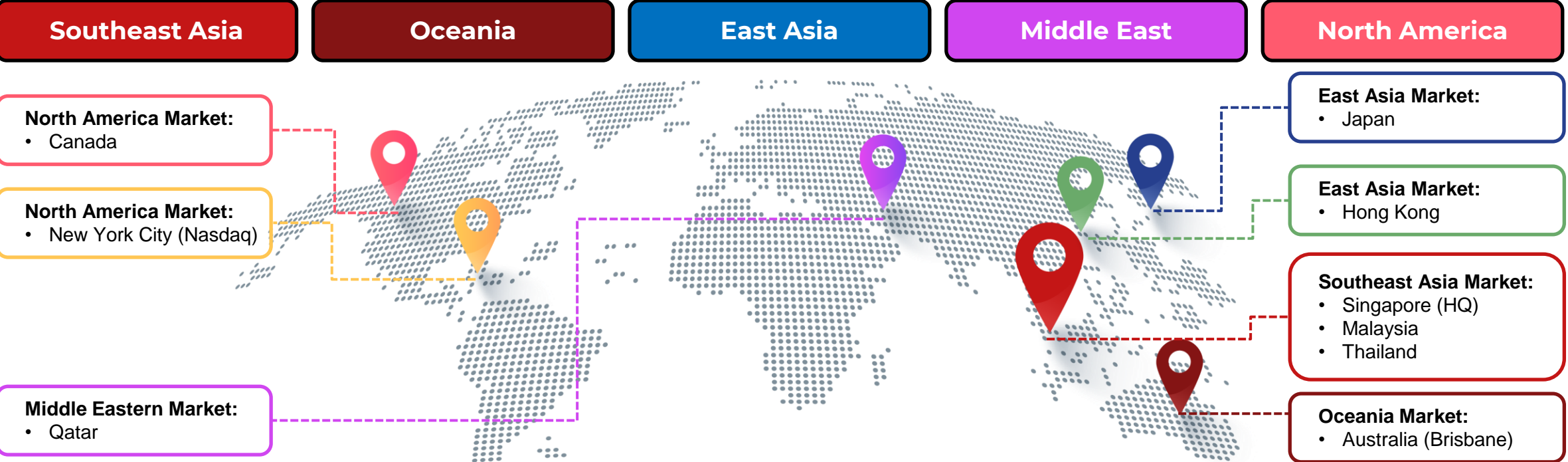
2023 is a huge year for SIMPPLE with multiple accolades and our listing milestone on Nasdaq

Company Milestones		Product Milestones	
	Listed on Nasdaq on 13 Sept 2023 Ticker Symbol - NASDAQ: SPPL		>2,400 Managed Users till date 
	SBR Technology Excellence Awards 2024 – Software (Real Estate)		110M Sensor data points collected in 2023 
	APAC Insider Singapore Business Awards Most Innovative AI PropTech Enterprise 2024		>600 Deployed robots in Singapore 
	WITSA 2023 A.I. Excellence Award (Private Sector)		4 Trial/pilot sites 
	ASME Singapore Prestige Brand Award: Most Promising Brand 2023		
	IMDA x SGTech Techblazer Awards 2023: Top 10 Most Promising Tech Innovation		
	Royal Institution of Chartered Surveyors Southeast Asia Innovation Award		

WHAT TO EXPECT FROM SIMPPLE IN THE FUTURE



SIMPPLE plans to be a global partner and brand in the PropTech space, solving real-life problems for facility managers



Affiliations and Memberships



SIMPPLE Partner Ecosystem



CONNECT WITH US



(Mr.) Alexis Goh

Head of Corporate Development, Partnerships & Government Relations
SIMPPLE Ltd.

follow us



@simpppleltd



@simpple.ai



@simpppleltd



learn more

www.simppl.ai



SIMPPLE LTD. | Copyright © 2024

