

Get Support for Home Wi-Fi and Devices

DigitalAccess@Home

住家数码共享计划

Skim 'Akses Digital@Rumah'

வீடுகளுக்கான மின்னிலக்கச் சேவைத் திட்டம்



Apply online now!

In support of



**SMART
NATION**
SINGAPORE

A THRIVING
DIGITAL
FUTURE
FOR ALL

Supported by



Need help to get home Wi-Fi or a device?

Lower-income households can get subsidies for home Wi-Fi, plus a laptop or tablet. This includes families with students, seniors, and persons with disabilities.

Scan the QR Code to apply now.



Who can apply?



Lives in a **HDB flat**



Has at least **one Singapore Citizen** in the household



Meets the **income level needed** for the support

Choose 1 type of support:



Home Wi-Fi ONLY



Laptop ONLY



Tablet ONLY



Home Wi-Fi + Laptop



Home Wi-Fi + Tablet

Have you redeemed home Wi-Fi or a device from IMDA in the last 3 years? IMDA will send you a reminder letter, SMS and/or email 2-3 months before your support expires to re-apply.

How much do you need to pay after support?



Scan QR code to estimate how much you need to pay



| | Tier 1 | Tier 2 | Tier 3 |
|-----------------------|---|---|---|
| Home Wi-Fi | Subscription Over 36 Months | Subscription Over 36 Months | Subscription Over 36 Months |
| Up to 500 Mbps | \$5 / month \$5.45/month with GST | \$10 / month \$10.90/month with GST | \$15 / month \$16.35/month with GST |
| Up to 1 Gbps | \$10 / month \$10.90/month with GST | \$15 / month \$16.35/month with GST | \$20 / month \$21.80/month with GST |

All home Wi-Fi includes:

 3 years of connectivity (2 years under contract)

 Home phone service



| | Tier 1 | Tier 2 | Tier 3 |
|---|-----------------------------------|-----------------------------------|-----------------------------------|
| Laptop or Tablet | One-time Co-payment | One-time Co-payment | One-time Co-payment |
| ACER Laptop 15.6" Intel Core i5 | \$220 \$239.80 with GST | \$445 \$485.05 with GST | \$665 \$724.85 with GST |
| Lenovo Laptop 16" AMD Ryzen 5 | \$235 \$256.15 with GST | \$475 \$517.75 with GST | \$710 \$773.90 with GST |
| Lenovo Tablet ~8" | \$75 \$81.75 with GST | \$155 \$168.95 with GST | \$230 \$250.70 with GST |
| Lenovo Tablet ~11" | \$85 \$92.65 with GST | \$165 \$179.85 with GST | \$250 \$272.50 with GST |

All laptops include:

 3-year warranty of parts

 3-year subscription of anti-virus software

 Microsoft Office (home & student)

 Laptop bag and mouse

All tablets include:

 3-year warranty of parts

 3-year subscription of anti-virus software

Which support tier do I get?

You may qualify if your total **monthly household income** is:

- **Less than \$1,900**, or
- **Less than \$650 per person**

Some tiers allow up to \$3,400 total household income / \$900 per person.

Tier 1

Households below qualify for Tier 1 support.

- Living in HDB Public Rental Scheme housing, or
- Under MSF ComCare schemes, or
- With at least one child on MOE Financial Assistance Scheme (FAS) AND total monthly household income below \$1,900 / \$650 per person

Tier 2

Households living in **1 to 3-room HDB flat** with a total monthly household income below \$1,900 / \$650 per person qualify for Tier 2 support.

The following households may qualify with a higher monthly income cap — up to \$3,400 / \$900 per person:

- With at least one child on MOE FAS
- With primary school student
- With a person with disabilities

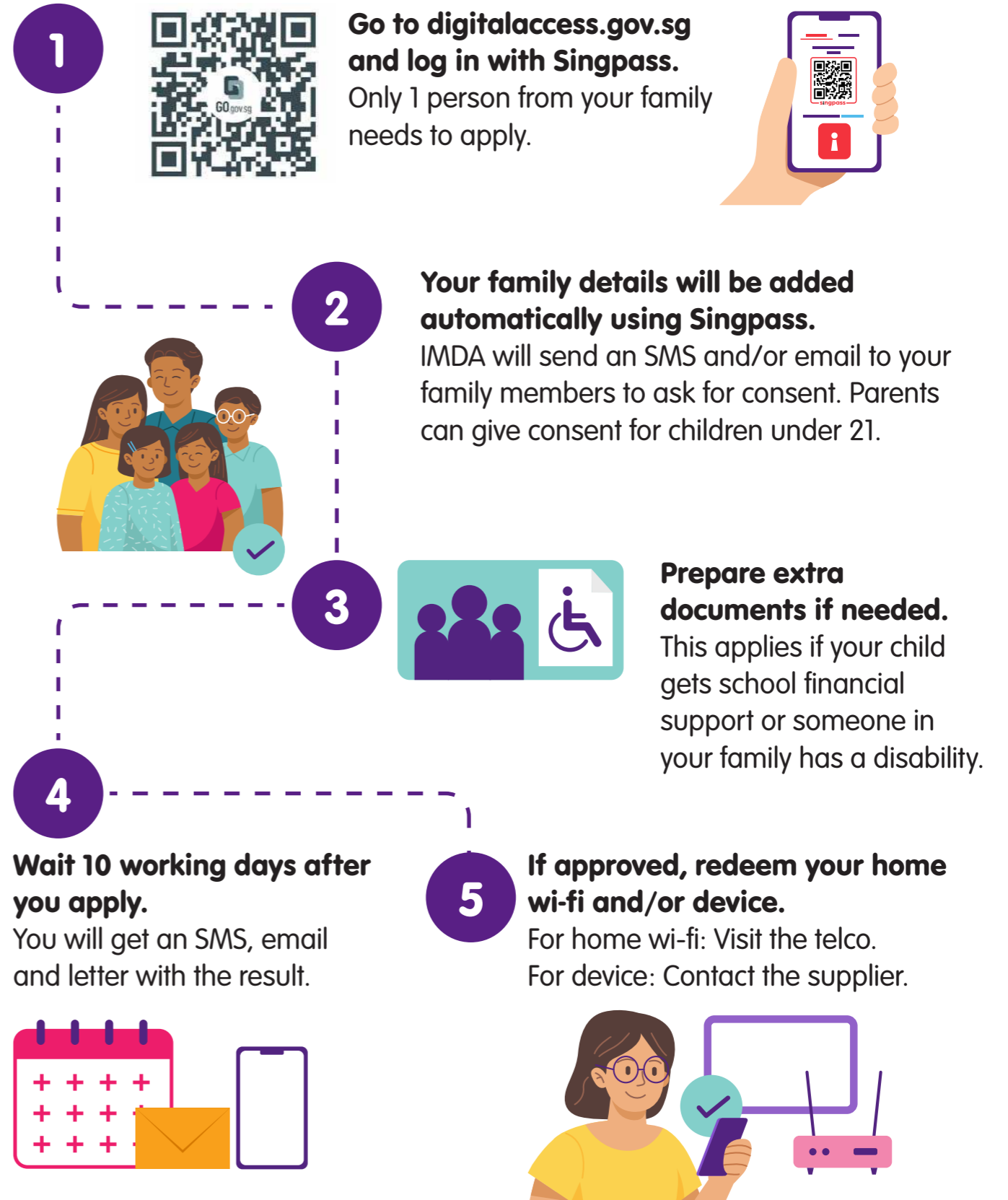
Tier 3

Households living in **4-room or larger HDB flat** with a total monthly household income below \$1,900 / \$650 per person qualify for Tier 3 support.

The following households may qualify with a higher monthly income cap — up to \$3,400 / \$900 per person:

- With primary school student
- With a person with disabilities

5 Steps to apply



Frequently Asked Questions (FAQs)

1. Must I get both home Wi-Fi and a device?

No, you do not have to get both home Wi-Fi and device. You can choose what works best for you — home Wi-Fi only, a device only, or both.

Your approval is valid for 3 months. Within this period, you can redeem home Wi-Fi, a device, or both — in one go or at separate times. If your approval has expired and you wish to redeem the other option, you will need to submit a new application.

2. What if I already have Wi-Fi at home?

You may wish to check with your current internet provider about your broadband contract. As terminating your contract may incur early termination charges, you may consider applying for DigitalAccess@Home after your contract ends.

3. I have more than one child. Can I apply for an additional laptop or tablet?

Each household can get only one laptop or tablet under this scheme.

If you need more devices, we recommend checking with your child's school or educational institution on their digital support programmes.

4. I have already redeemed a subsidised mobile phone from the Mobile Access for Seniors (MAS) programme. Can I apply for this?

The DigitalAccess@Home scheme is not the same as the Mobile Access for Seniors (MAS) programme. To check if you can get support from DigitalAccess@Home scheme, you can complete our interactive questionnaire on www.imda.gov.sg/dah.

5. I previously redeemed home Wi-Fi but did not redeem for the device then. Can I apply for the scheme again?

Yes, you can. If your approval has expired, you may simply submit a new application at www.digitalaccess.gov.sg.

6. How long is the support for?

Broadband (Home Wi-Fi): The support for subsidised fibre broadband is 3 years with monthly payments over 36 months.

Devices (Laptop or Tablet): Each device comes with 3 years of support. During this period, you cannot apply for another device under the scheme.

Scan here for
more FAQs.





Need help?

Visit your nearest **SG Digital Community Hub**.
go.gov.sg/sgdcommhub

Contact Us



Call IMDA at
6377 3800



Email
digitalaccess@imda.gov.sg



Use our **Live Chat**
go.gov.sg/imda-dah-livechat



Scan to watch a quick 3-min
explainer video



Scan QR to learn more about the scheme
www.imda.gov.sg/dah



All information provided is accurate at the time of printing and is subject to changes.
Please visit www.imda.gov.sg/dah for the most updated information.