

CONTENT PRODUCTION

FROM 15 MARCH 2022 ONWARDS

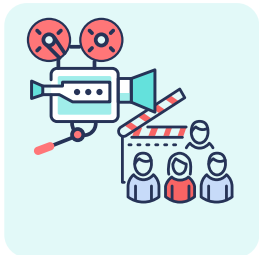


Most businesses will continue to resume activities subject to safe distancing principles, **1-metre safe distance is encouraged in mask-on settings; in mask-off settings, there must be 1-metre safe distance between each group of up to 5 persons.**

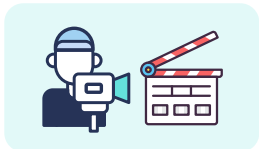
For updates on advisories, please refer to [go.gov.sg/advisories](https://www.go.gov.sg/advisories)



Scales of Production



- A** All personnel (talent/performers, crew, staff) involved in media production as a business activity must comply with the Workforce Vaccination Measures and proceed, at any given time, with the following manpower limits:
- No more than 50 personnel on location, of which
 - No more than 20 onscreen talent/performers (may be unmasked if necessary; performers who are singing "live" must have a safe distancing of 1 metre from the next person), at any given time.



*From 14 March 2022, persons aged 12 and above who have completed their primary vaccination series under the National Vaccination Programme and are eligible for booster vaccination will be considered as fully vaccinated for 270 days after the last dose in their primary vaccination series. All eligible persons should receive their booster dose no later than 270 days after the last dose in their primary vaccination series to maintain their vaccination series.



All content productions must comply with the **Mandatory Safety Rules for Content Production** where **1 metre safe distancing is required at all times, for all personnel on location including onscreen talent/performers where reasonably practicable.**




Strict limit of production size


Please know and **adhere to your production size limits** if there is "live" singing, it is required to keep to a 1m distance from the next person




Safe Distancing



Safe Socialising




Information Sharing and Contact Tracing




Appoint Designated Health / Safety Officer

Monitor and enforce all COVID-19 protocols such as hygiene measures and data collection

Conduct mandatory health and safety briefing before commencement of production and on each day of production



Personal Health Advisory



Production Health & Sanitation Management



Health, Travel & Safety Declarations



Talent/performers and crew should follow the prevailing community rules pertaining to social gathering at the workplace and continue to **observe 1m safe distancing between individuals at all times, including during meals and breaks.**

Mandatory Safety Rules for Resumption of Content Production from IMDA



<https://www.imda.gov.sg/for-industry/sectors/Media/Film/Filming-in-Singapore>

Additional Comprehensive Safety Measures

In addition to the **Mandatory Safety Rules** by IMDA, all productions are advised to follow the set of **Comprehensive Safety Measures** hosted on the website of Association of Independent Producers (AIPRO) and the Singapore Association of Motion Picture Professionals (SAMPP).

Both documents have been collectively put together by Singapore media industry representatives and associations.

Association of Independent Producers (AIPRO)



<https://aipro.tv/covid-19-workplace-safety-protocols-guidelines>

Singapore Association of Motion Picture Professionals (SAMPP)



<https://www.sampp.org.sg/covidsafetyprotocols/>



[f](#) [t](#) [v](#) [in](#) /IMDAsg

#SGDIGITAL

